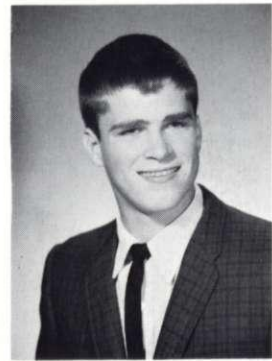


KEITH MORRISON "Ki Ki"—Cross Country 1; Swim 2, 3; Wrestling 1; Freshman Boys Chorus; Gym leader 3.

JIM MUELLER "Little Beef"—Football 1, 2, 3, 4; Letter 1, 2, 3, 4; Wrestling 1, 2, 3, 4; Letter 1, 2, 3, 4; Gym leader 2, 3.

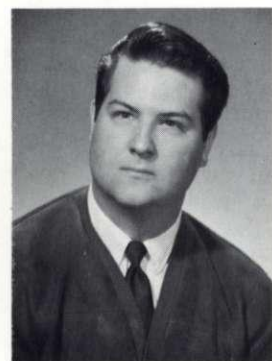
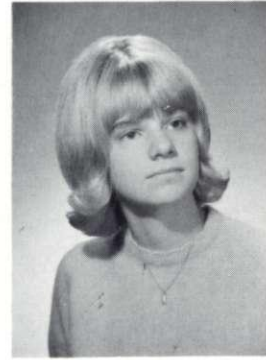
LINDA MULLINS—G.A.A. 1, 2; F.T.A. 1; Pep Club 1, 2, 3; D.E. 4.



NANCY NONDORF "Nanc"—National Honor Society 4; G.A.A. 2; F.B.L.A. 3; Debate 2; N.F.L. 2; Pep Club 1, 2, 3, 4; Guidance office 3; Gym assistant 2; Prom committee; Student assistant 4.

CHRIS NOWACYK—Dramatics Club 1; Play cast 1; Tour play 1.

MAUREEN O'CONNOR "Moe"—G.A.A. 1.



BOB O'DELL

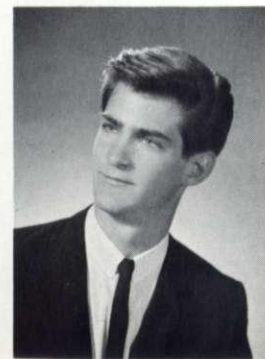
JIM O'NEAL

KEITH OSTBY

JIM OSTRANDER "Cat"—Transferred from Bishop Noll in sophomore year; Wrestling 2; letter 2; Football 2.

DARYL OVERMEYER—Football 1; Letter 1; D.O. 3, 4.

TOM PADJEN "Padj"—Football 1, 2, 3, 4; Letter 1, 2, 3, 4; All conference 4; Basketball 1, 2; Letter 1, 2; Baseball 1, 2, 3, 4; Letter 1, 2, 3, 4; Letterman's Club 3, 4; National Honor Society 4.



ROSEMARY PALENIK "Rose"—Sophomore class vice-president; Girls Club board 3, 4; Pin 4; G.A.A. 1, 2; Rebel Rouser Staff 4; Dramatics Club 2; Pep Club 2, 3, 4; Gym assistant 3, 4; French Club 2; Follies 3, 4; DAR candidate 4; Prom committee; Swim timer 3.

JIM PALMER "Grassman"—Wrestling 1, 2, 3, 4; Letter 1, 2, 3, 4; Spanish Club 1, 2; Debate 1; Letterman's Club 2, 3, 4; Varsity band 1, 2; Speech 1; Gym leader 4.

JAMES PANOZZO—"Panoz"—Transferred from Alexander Fleming High, California, in freshman year; Football 2, 3, 4; Letter 4; Letterman's Club 4.

PAULA GAE PARKER—Spanish Club 3; Secretary 3; F.T.A. 2, 3; Advanced Girls Chorus 2, 3; Freshman Girls Chorus; National Thespian Society 2, 3, 4; Dramatic Club 1; Speech 3, 4; N.F.L. 3, 4; Pep Club 1, 2; Double Sextette 4; Play cast 1, 2, 3, 4; Tour Play 1, 2, 3, 4; Follies 3, 4.

VINCE PARRO

RON PARYL



JENNY PATE

LOIS PAWLOWSKI

SHARON PAYLO "Shari"—Dramatics Club 1.

LARRY PELCHER

IDA PERSCH—G.A.A. 1, 2, 3, 4.

ARTHUR PETERSON "Pete"—Spanish Club 3, 4; Treasurer 3, 4; Science Club 3, 4; Vice-president 4.



JANIS PETERSON "Jan"—Terrapin Club 1, 2; Mixed Chorus 2; Dramatics Club 1.

ELIZABETH PICKERING "Beth"—Girls Club board 1, 2; Secretary 3; President 4; G.A.A. 1; Pep Club 1, 2; Deans Office 3; French Club 1, 2; Follies 4; Cheerleader 3.

CELESTE ANN PILACKAS "Lest"—Student Council 4; Girls Club board 3, 4; G.A.A. 1, 2, 3; Terrapin Club 1; Double Sextette 4; Advanced Girls Chorus 2, 3; Freshman Girls Chorus; Dramatics Club 1, 2, 3, 4; Pep Club 2, 3, 4; Deans office 3, 4; Swim timer 3; German Club 2; Play cast 3; Follies 3, 4; prom committee.