

Diane begins her reign October 5th as 1968 TFS Homecoming Queen

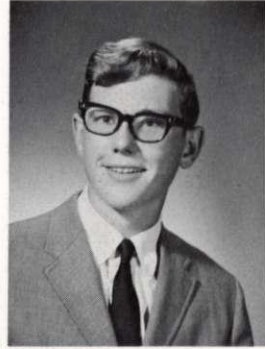
Regina Langbeen—"Gina"—Spanish Club 1, 2, 3; Pin 3; Freshman Girls Chorus 1; Advanced Girls Chorus 2, 3; Dramatics Club 1, 2; Gym Leader 4; O.O. 4.



Lori La Reau—Dramatics Club 1.

Steve Leadbetter—Track 1, 2.

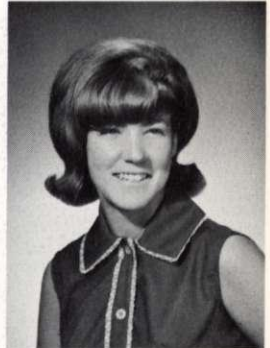
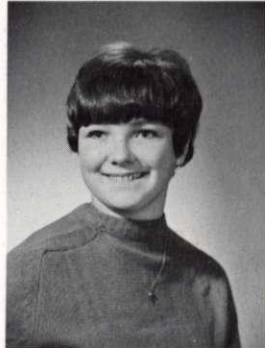
Joseph J. LeClaire Jr.—"Jo-Jo"—Library Assistant 1, 2, 3, 4; Bookstore Assistant 3, 4.



Richard Lindberg—"Lindy"—Transferred from Bowen High School, Chicago, Illinois in 1968; Varsity Band 1, 2, 3; Math Club 1, 2; Key Club 2.

Elizabeth Lindemann—"Betty"—Transferred from Bishop Noll, Hammond, Indiana in 1967; G.A.A. 3; F.B.L.A. 4; Pep Club 3, 4; Guidance Office 3; 1968 Graduation Participant 3; German Club 4; 2nd Place Award in Typing 1 3.

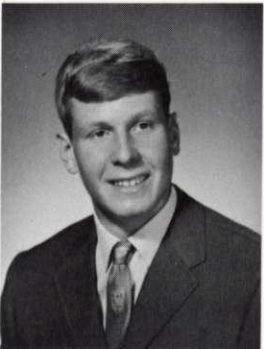
John Link—Freshman Boys Chorus 1; Meistersingers 2, 3, 4; Concert Choir 4; National Thespian Society 3, 4; Dramatics Club 2; Play Cast 2, 3, 4; Tour Play 2; Stage Crew 4; Wrestling 1; Follies Cast 2, 3, 4.



Patricia Link—"Pat"—Freshman Girls Chorus 1; Mixed Chorus 2; A Cappella Choir 3; Concert Choir 4; Pep Club 2, 3; Follies Cast 3.

Michele Linn—"Mickey"—Spanish Club 3, 4; Vice-President 4; G.A.A. 1; Intermediate Band 1, 2; Varsity Band 3.

Alan Liptak—"Animal Al"—Football 2, 3, 4; Letter 2, 3, 4; Track 1, 2, 3, 4; Letter 1, 2, 3, 4; Letterman's Club 4; Freshman Boys Chorus 1; Mixed Chorus 2; Concert Choir 3.



Belinda June Love—Terrapin Club 2, 3; F.T.A. 3; Varsity Band 1, 2, 3, 4; Letter 2; Pep Club 4; French Club 3, 4; Vice-President 4; Swim Timer 3, 4; Stage Band 3, 4.

Art Lundin

Marion Luszyk—"Mar"—Gym Leader 4.

Ann Marie Mach—D.E. 4.

Daniel Madison—"Dan"—Bookstore Assistant 3.

